

DSP series (75W~600W , 10mV/1mA, with USB interface)



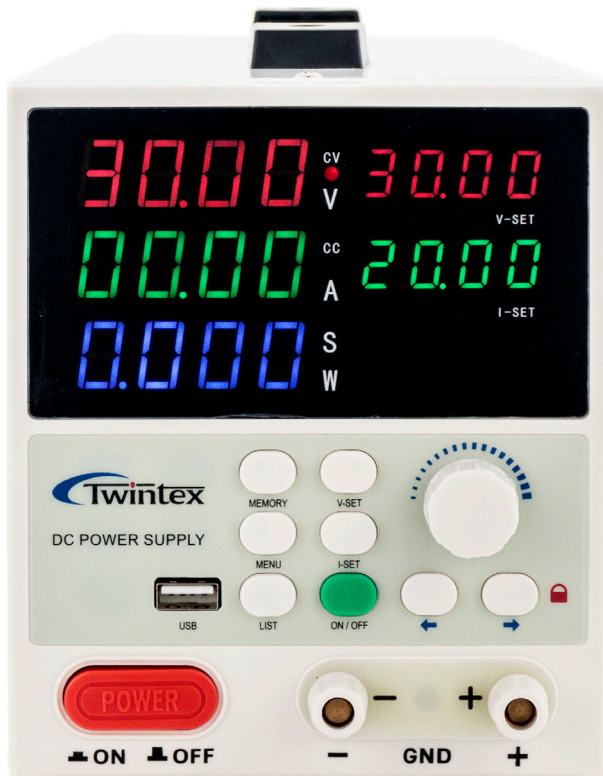
Introduction

DSP series programmable DC power supplies are single output switch mode power supplies, rated power from 75W to 600W. With SCM digital control and switch mode power supply post-stage technology, the DSP series power supplies feature precise adjustment, high stability output, reliable and durable service life.

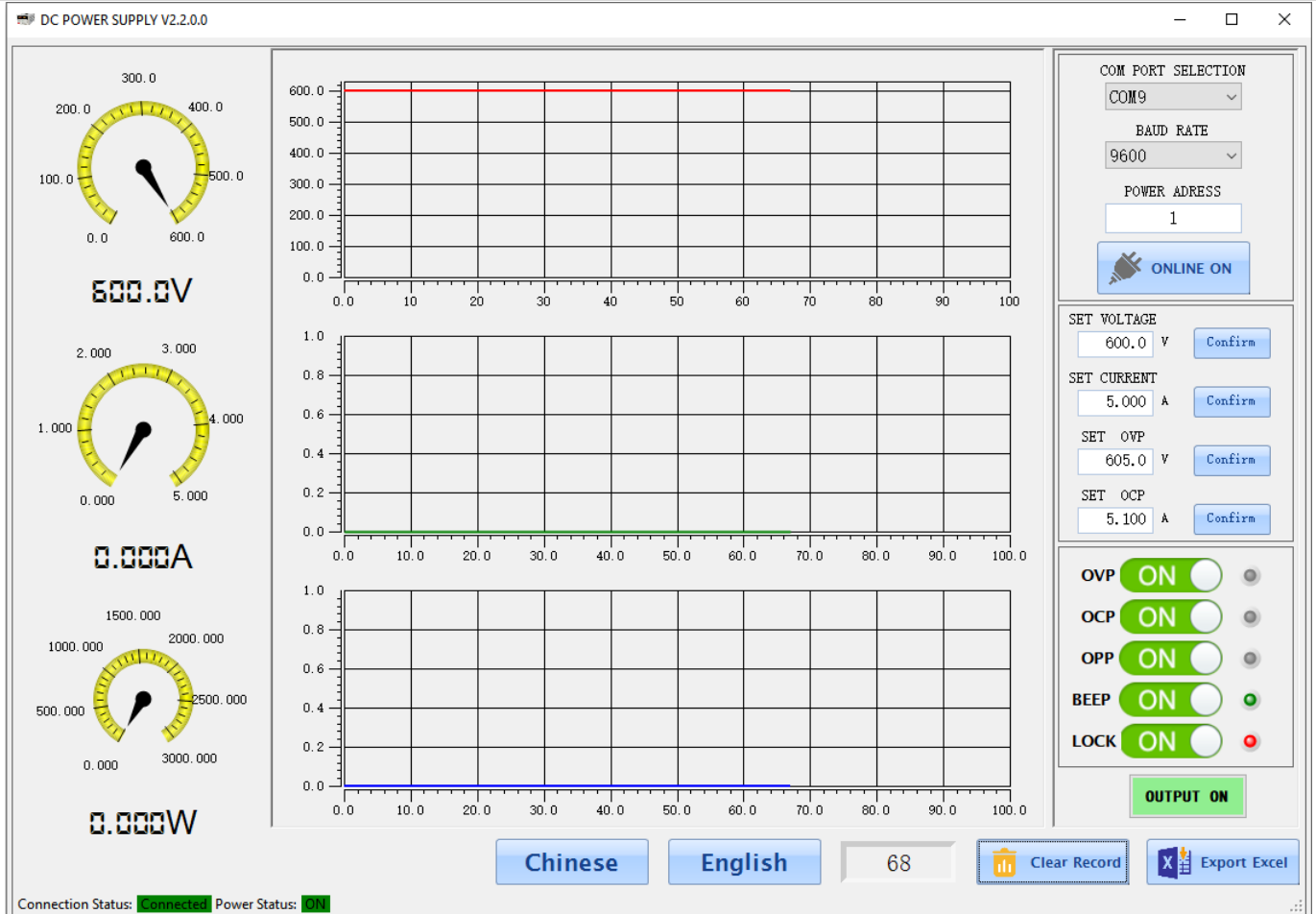
Features

- ✓ 4 digits LED display for Vset, Iset, Vout, Iout, Watt.
- ✓ Display resolution 10mV/1mA
- ✓ 6 sets of save and recall for voltage, current and time setup
- ✓ List mode function
- ✓ Panel lock function
- ✓ Output ON/OFF control
- ✓ Protections: OVP, OCP, OTP
- ✓ Built-in beeper alarm
- ✓ Delay time setup (9999s)
- ✓ USB interface, support ModBus-RTU commands

Product photos



Free PC control software



Programmable DC Power Supply

Specifications

Output	
Line regulation	CV≤0.2%FS, CC≤0.2%FS
Load regulation	CV≤0.2%FS, CC≤0.2%FS
Ripple & Noise	CV≤0.5%FS Vrms, CC≤0.5%FS Vrms
Setting accuracy (25±5°C)	±(0.1%FS+2 digits)
Display	
V & A display resolution	10mV/1mA, 100mV/1mA
Power display resolution	0.001W-0.01W-0.1W Auto
Reading accuracy (25±5°C)	≤(0.1%FS+2 digits) for voltage and current
General	
Protection	Over voltage, over current and over temperature protections
Interface	USB interface, support ModBus-RTU commands
Memory	6 sets
Power source	AC220V±10%, 50/60Hz (110V, 120V, 230V, 240V at request)
Accessories	Power cord x1, Operation manual x1, USB cable x1
Dimensions	125Wx160Hx260D mm
Weight	Approx 2kg

Specifications are subject to change without prior notice.

Selection Guide

Model	Rated Voltage	Rated Current	Voltage Display	Current Display	Resolution
DSP-1505	15V	5A	00.00-16.00V	0.000-5.100A	10mV/1mA
DSP-1510	15V	10A	00.00-16.00V	00.00-10.20A	10mV/10mA
DSP-1520	15V	20A	00.00-16.00V	00.00-20.20A	10mV/10mA
DSP-1530	15V	30A	00.00-16.00V	00.00-30.20A	10mV/10mA
DSP-3205	32V	5A	00.00-32.00V	0.000-5.100A	10mV/1mA
DSP-3206	32V	6A	00.00-32.00V	0.000-6.100A	10mV/1mA
DSP-3210	32V	10A	00.00-32.00V	00.00-10.20A	10mV/10mA
DSP-3220	32V	20A	00.00-32.00V	00.00-20.20A	10mV/10mA
DSP-3605	36V	5A	00.00-36.00V	0.000-5.100A	10mV/1mA
DSP-6003	62V	3A	00.00-62.00V	0.000-3.100A	10mV/1mA
DSP-6005	62V	5A	00.00-62.00V	0.000-5.100A	10mV/1mA
DSP-6006	62V	6A	00.00-62.00V	0.000-6.100A	10mV/1mA
DSP-6010	62V	10A	00.00-62.00V	00.00-10.20A	10mV/1mA
DSP-1001	102V	1A	00.00-99.99-102.0V	0.000-1.100A	100mV/1mA
DSP-1002	102V	2A	00.00-99.99-102.0V	0.000-2.100A	100mV/1mA
DSP-1003	102V	3A	00.00-99.99-102.0V	0.000-3.100A	100mV/1mA
DSP-1006	102V	6A	00.00-99.99-102.0V	0.000-6.100A	100mV/1mA
DSP-1201	122V	1A	000.0-122.0V	0.000-1.100A	100mV/1mA
DSP-1202	122V	2A	000.0-122.0V	0.000-2.100A	100mV/1mA
DSP-1203	122V	3A	000.0-122.0V	0.000-3.100A	100mV/1mA
DSP-1501	152V	1A	000.0-152.0V	0.000-1.100A	100mV/1mA
DSP-1502	152V	2A	000.0-152.0V	0.000-2.100A	100mV/1mA
DSP-2001	202V	1A	000.0-202.0V	0.000-1.100A	100mV/1mA
DSP-2002	202V	2A	000.0-202.0V	0.000-2.100A	100mV/1mA

